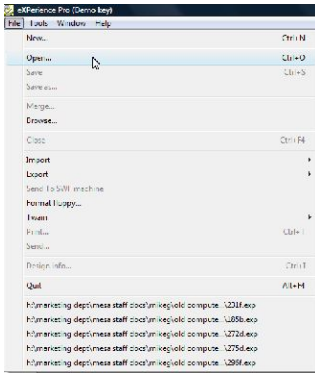
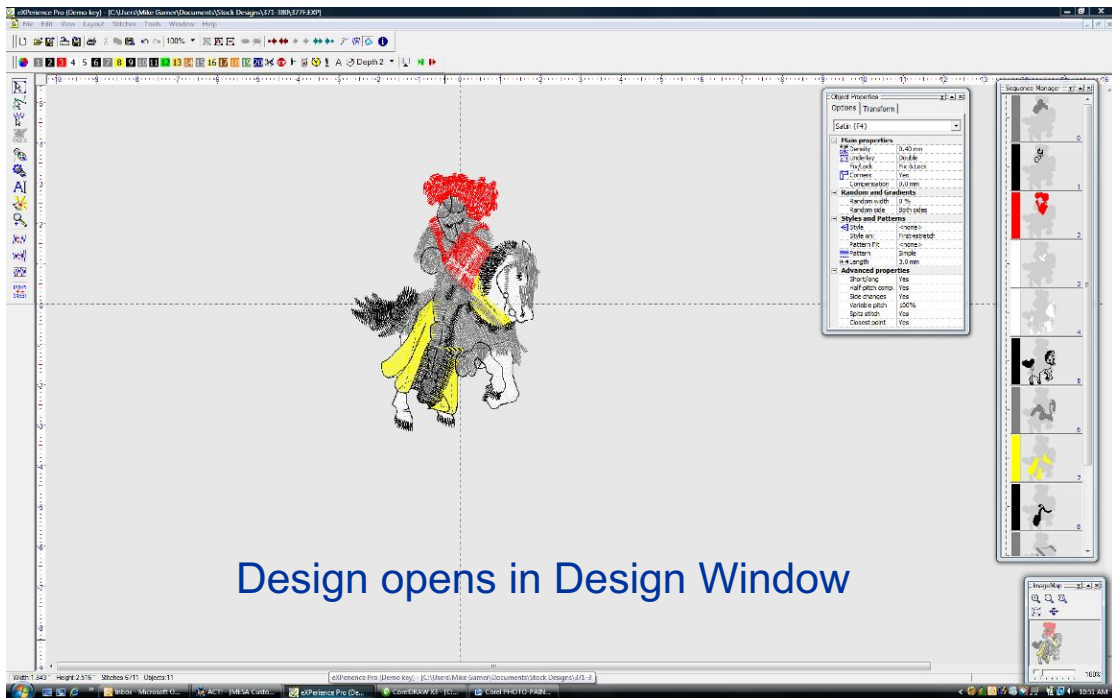


# Stitch Editing

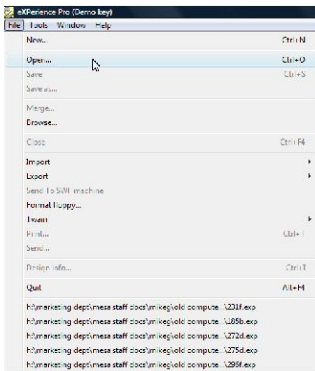
## Merging Multiple Stock Designs



Step 1: Open file



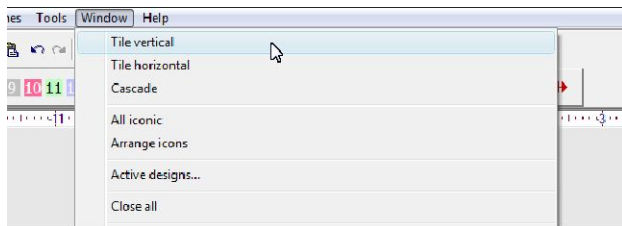
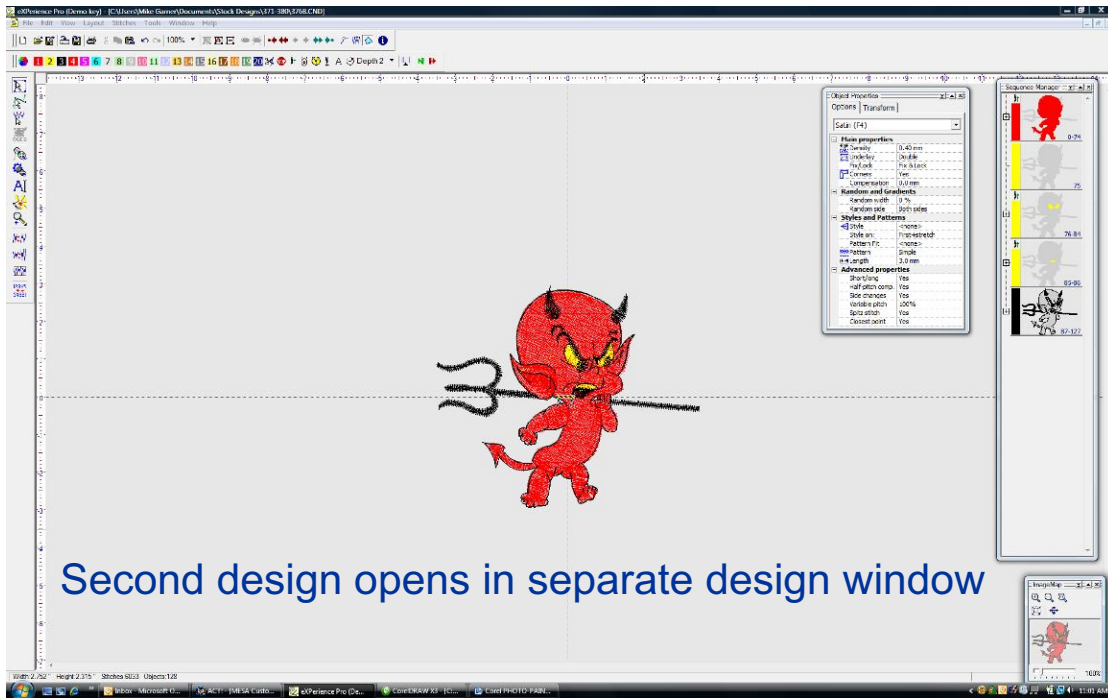
Design opens in Design Window



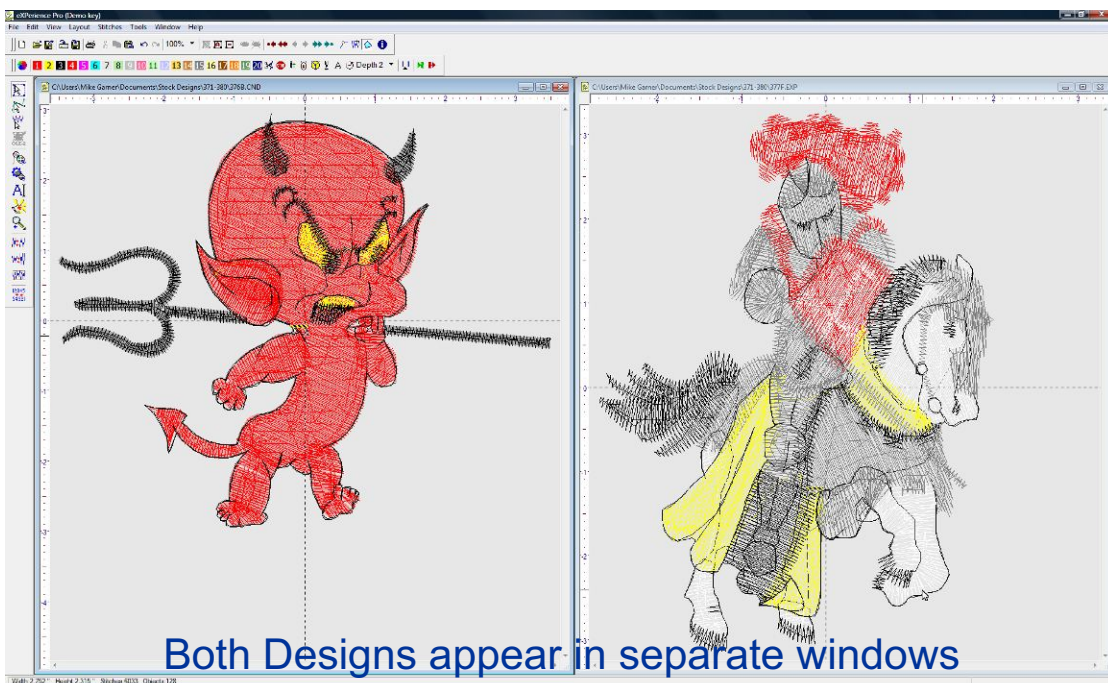
Step 2: Open second file

# Stitch Editing

## Merging Multiple Stock Designs

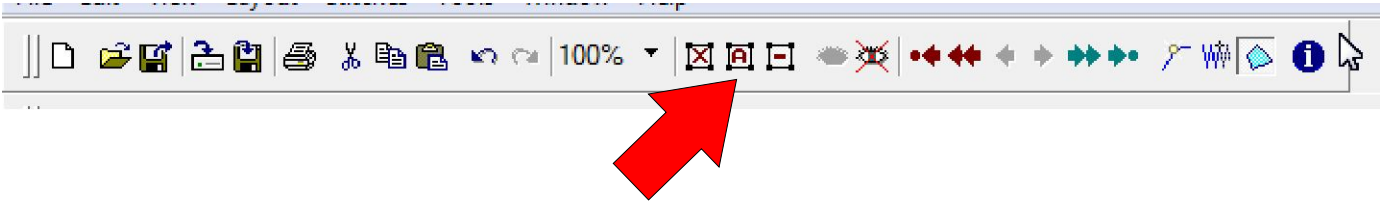


Step 3: Select Tile Vertical or Tile Horizontal from Window drop down menu

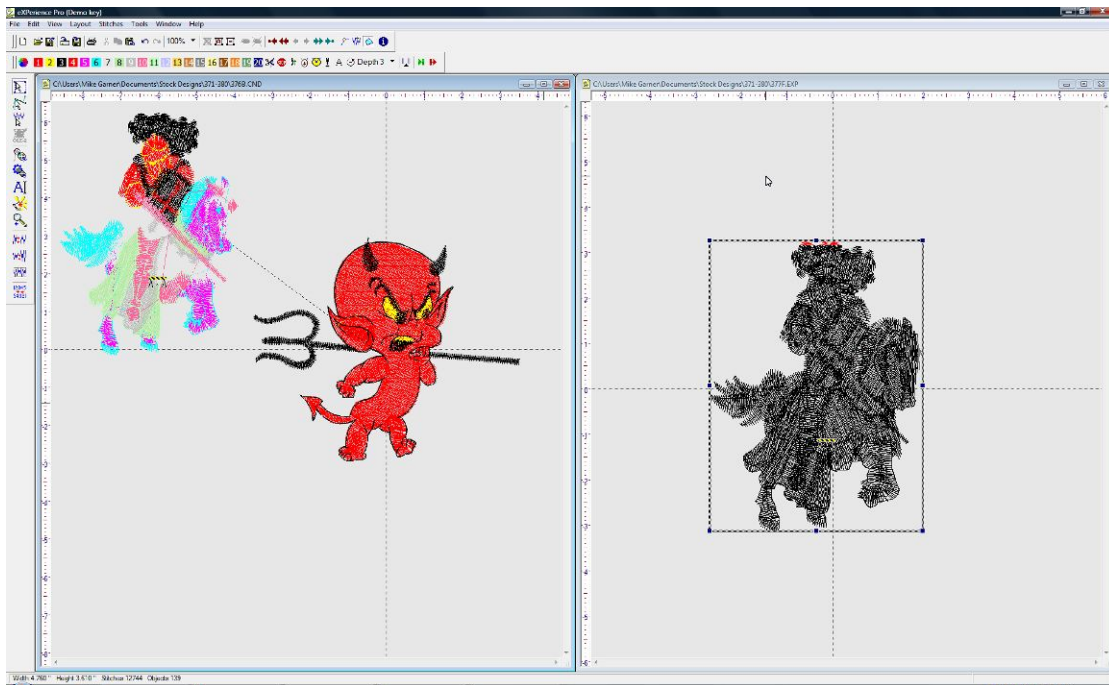


# Stitch Editing

## Merging Multiple Stock Designs



Left click on a window to make it active. Use Select All icon to highlight the entire design.



Hold Shift + Left Click and drag the box into the adjacent design window. Release the mouse button to place the merged designs together.